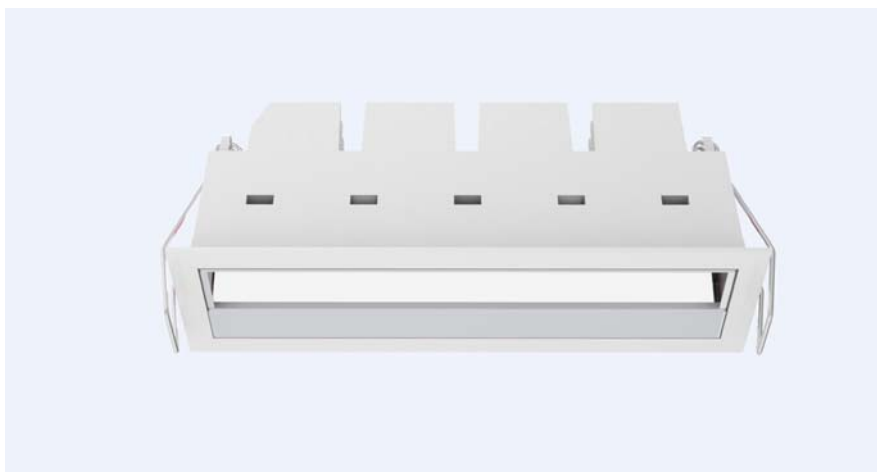

LED Downlight FUSION Series LE-
FW5-11W-840



Light Output Ratio:	100.0%	
Luminaire Power:	12.52 W	
SHR Nominal:	1.25	Calculated using the TM5
SHR Maximum:	1.30	fine grid method.

C Range: 0 - 360DEG
C Interval: 15.0DEG
Test Speed: HIGH
Temperature: 25.3DEG
Operators: Meng Yongjian
Test Date: 2017-01-09

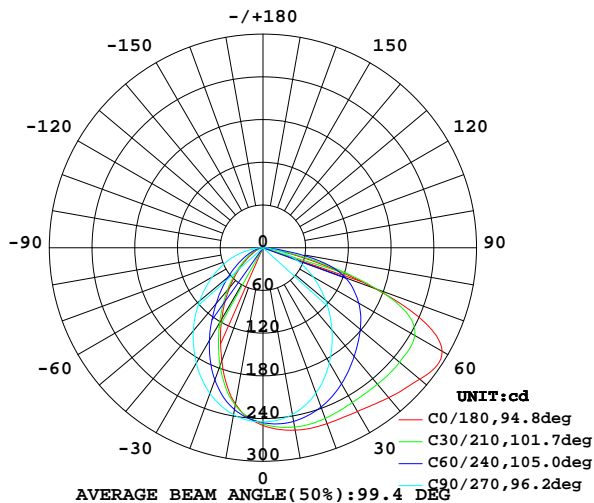
γ Range: 0 - 90DEG
 γ Interval: 1.0DEG
Test System: EVERFINE GO-2000B_V1 SYSTEM V2.0.288
Humidity: 52%
Test Distance: 5.850m [K=1.0000]
Remarks:

LUMINAIRE PHOTOMETRIC TEST REPORT

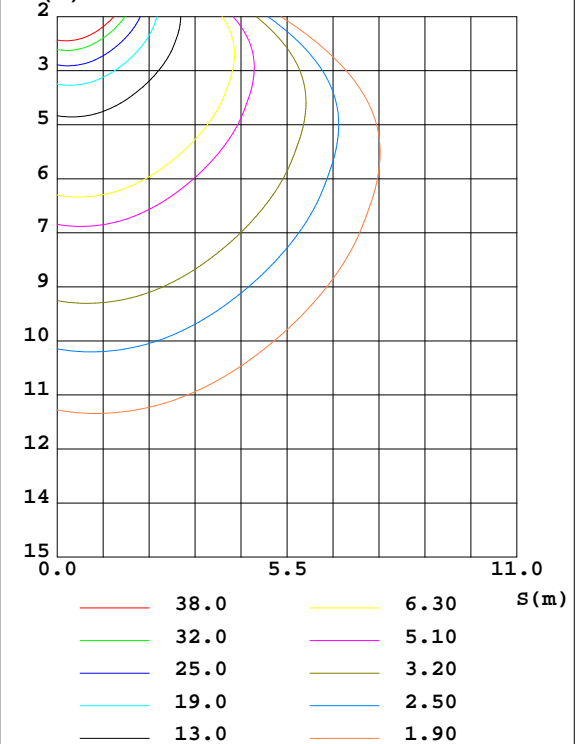
Test:U:220.7V I:0.0622A P:12.52W PF:0.9026 Lamp Flux:667.349x1 lm		
NAME: FW5-11W-840	TYPE:Downlight	SERIAL No.:
SPEC.:4000K	DIM.: L153mm*W45mm*H60mm	
MFR.:		

DATA OF LAMP		PHOTOMETRIC DATA Eff: 53.30 lm/W			
MODEL	CREE-4000K	I _{max} (cd)	295.2	S/MH(C0/180)	0.82
NOMINAL POWER(W)	13.0	LOR(%)	100.0	S/MH(C90/270)	1.15
RATED VOLTAGE(V)	220	TOTAL FLUX(lm)	667.35	η UP,DN(C0-180)	0.0,52.9
NOMINAL FLUX(lm)	667.349	CIE CLASS	DIRECT	η UP,DN(C180-360)	0.0,47.1
LAMPS INSIDE	1	η up(%)	0.0	CIBSE SHR NOM	1.25
TEST VOLTAGE(V)	220	η down(%)	100.0	CIBSE SHR MAX	1.30

LUMINOUS INTENSITY DISTRIBUTION DIAGRAM



C0 PLANE ISOLUX DIAGRAM (UNIT:lx)



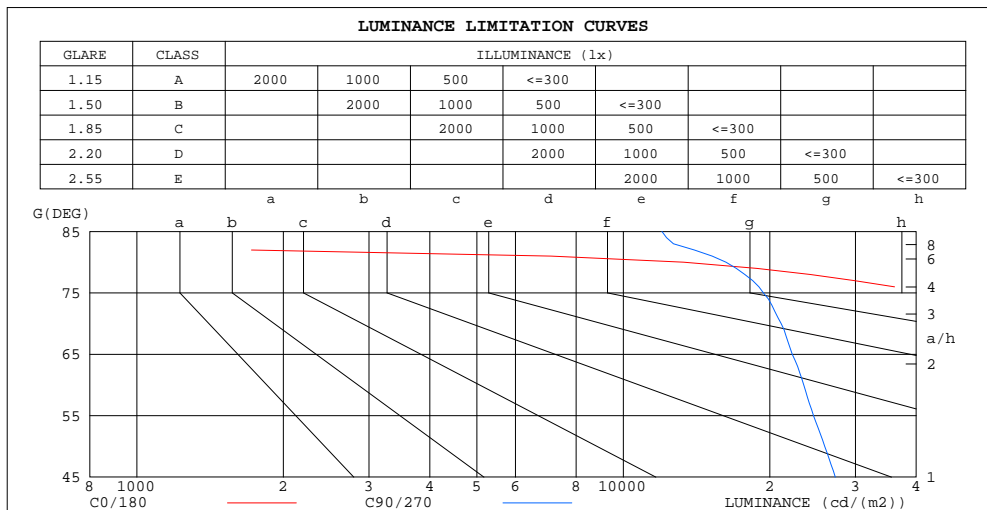
C Range: 0 - 360DEG
 C Interval: 15.0DEG
 Test Speed: HIGH
 Temperature:25.3DEG
 Operators:Meng Yongjian
 Test Date:2017-01-09

γ Range: 0 - 90DEG
 γ Interval: 1.0DEG
 Test System:EVERFINE GO-2000B_V1 SYSTEM V2.0.288
 Humidity:52%
 Test Distance:5.850m [K=1.0000]
 Remarks:

ZONAL FLUX DIAGRAM AND LUMINANCE LIMITATION CURVES

ZONAL FLUX DIAGRAM:

γ	C0	C45	C90	C135	C180	C225	C270	C315	γ	Φ zone	Φ total	Φ lum, lamp
10	260.1	252.1	237.8	224.8	222.9	227.3	238.1	249.0	0- 10	23.10	23.10	3.46,3.46
20	262.8	247.7	217.4	183.3	169.2	185.0	217.9	244.8	10- 20	64.30	87.39	13.1,13.1
30	265.5	237.1	186.5	131.0	116.0	131.9	187.2	234.6	20- 30	92.59	180.0	27,27
40	274.8	226.0	150.8	85.48	73.05	86.17	152.2	223.9	30- 40	107.7	287.7	43.1,43.1
50	287.4	215.8	114.8	51.20	40.00	51.49	116.2	214.3	40- 50	113.4	401.1	60.1,60.1
60	290.4	200.7	80.85	27.82	18.88	28.01	82.62	199.3	50- 60	112.5	513.6	77,77
70	167.8	157.1	49.72	13.80	8.553	13.97	51.76	153.7	60- 70	97.92	611.5	91.6,91.6
80	15.90	37.46	19.43	5.614	3.582	5.686	20.96	34.46	70- 80	49.25	660.8	99,99
90	0.0853	0.1268	0.5204	0.6231	0.5947	0.5641	0.1509	0.0831	80- 90	6.563	667.3	100,100
100									90-100			
110									100-110			
120									110-120			
130									120-130			
140									130-140			
150									140-150			
160									150-160			
170									160-170			
180									170-180			
DEG	LUMINOUS INTENSITY:cd									UNIT:lm		



LUMINANCE cd/(m2)		
G(°)	C0/180	C90/270
85	519	12006
80	13301	16252
75	41567	19407
70	71269	21115
65	87023	22249
60	84365	23487
55	74576	24604
50	64947	25947
45	57633	27276

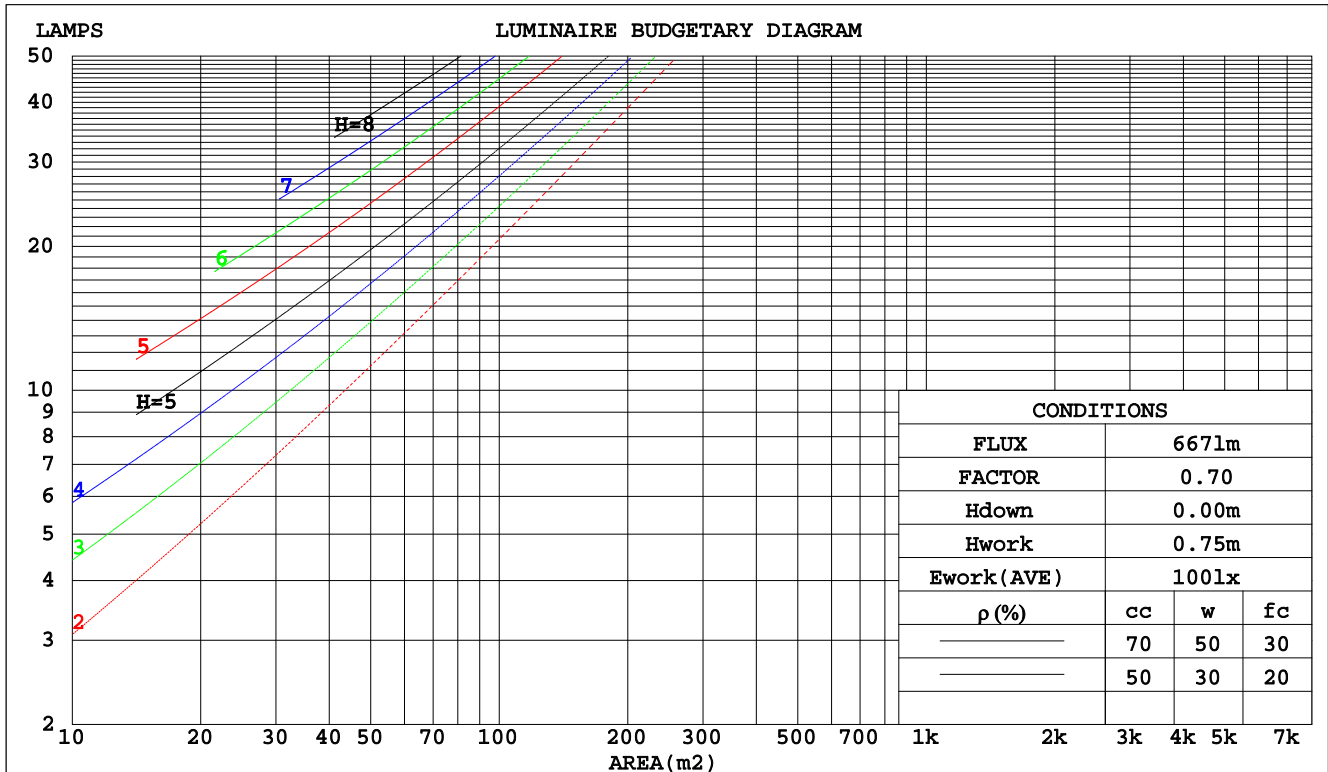
C Range: 0 - 360DEG
 C Interval: 15.0DEG
 Test Speed: HIGH
 Temperature: 25.3DEG
 Operators: Meng Yongjian
 Test Date: 2017-01-09

γ Range: 0 - 90DEG
 γ Interval: 1.0DEG
 Test System: EVERFINE GO-2000B_V1 SYSTEM V2.0.288
 Humidity: 52%
 Test Distance: 5.850m [K=1.0000]
 Remarks:

CU AND LUMINAIRE BUDGETARY ESTIMATE DIAGRAM

Test:U:220.7V I:0.0622A P:12.52W PF:0.9026 Lamp Flux:667.349x1 lm		
NAME: FW5-11W-840	TYPE:Downlight	SERIAL No.:
SPEC.:4000K	DIM.: L153mm*W45mm*H60mm	
MFR.:		

pcc	80%			70%			50%			30%			10%			0
pw	50%	30%	10%	50%	30%	10%	50%	30%	10%	50%	30%	10%	50%	30%	10%	0
pfc	20%			20%			20%			20%			20%			0
RCR	RCR:Room Cavity Ratio						Coefficients of Utilization(CU)									
0.0	1.19	1.19	1.19	1.16	1.16	1.16	1.11	1.11	1.11	1.06	1.06	1.06	1.02	1.02	1.02	.00
1.0	1.04	.00	.96	1.02	.98	.94	.97	.94	.91	.94	.91	.88	.90	.88	.86	.84
2.0	.90	.83	.77	.88	.82	.77	.85	.79	.75	.81	.77	.73	.78	.75	.71	.69
3.0	.79	.71	.64	.77	.70	.63	.74	.68	.62	.71	.66	.61	.69	.64	.60	.58
4.0	.70	.61	.54	.68	.60	.53	.66	.58	.53	.63	.57	.52	.61	.56	.51	.49
5.0	.62	.53	.46	.61	.52	.46	.59	.51	.45	.57	.50	.45	.55	.49	.44	.42
6.0	.56	.47	.40	.55	.46	.40	.53	.45	.40	.51	.45	.39	.50	.44	.39	.37
7.0	.51	.42	.35	.50	.41	.35	.48	.41	.35	.47	.40	.35	.45	.39	.35	.33
8.0	.46	.38	.32	.45	.37	.32	.44	.37	.31	.43	.36	.31	.42	.36	.31	.29
9.0	.42	.34	.28	.42	.34	.28	.41	.33	.28	.40	.33	.28	.38	.32	.28	.26
10.0	.39	.31	.26	.39	.31	.26	.38	.31	.26	.37	.30	.26	.36	.30	.25	.24



C Range: 0 - 360DEG
 C Interval: 15.0DEG
 Test Speed: HIGH
 Temperature: 25.3DEG
 Operators: Meng Yongjian
 Test Date: 2017-01-09

γ Range: 0 - 90DEG
 γ Interval: 1.0DEG
 Test System: EVERFINE GO-2000B_V1 SYSTEM V2.0.288
 Humidity: 52%
 Test Distance: 5.850m [K=1.0000]
 Remarks:

WEC AND CCEC

Test:U:220.7V I:0.0622A P:12.52W PF:0.9026 Lamp Flux:667.349x1 lm		
NAME: FW5-11W-840	TYPE:Downlight	SERIAL No.:
SPEC.:4000K	DIM.: L153mm*W45mm*H60mm	
MFR.:		

pcc	80%			70%			50%			30%			10%			0	
pw	50%	30%	10%	50%	30%	10%	50%	30%	10%	50%	30%	10%	50%	30%	10%	0	
pfc	20%			20%			20%			20%			20%			0	
RCR	RCR:Room Cavity Ratio						Wall Exitance Coefficients(WEC)										
0.0																	
1.0	.308	.175	.055	.301	.172	.055	.288	.165	.053	.275	.159	.051	.264	.153	.049		
2.0	.294	.161	.049	.288	.159	.049	.276	.154	.048	.265	.149	.047	.255	.144	.046		
3.0	.273	.145	.044	.268	.143	.043	.257	.139	.042	.248	.136	.042	.239	.132	.041		
4.0	.252	.131	.039	.247	.129	.038	.238	.126	.038	.229	.123	.037	.222	.120	.037		
5.0	.233	.119	.034	.229	.117	.034	.220	.115	.034	.213	.112	.033	.206	.110	.033		
6.0	.216	.108	.031	.212	.107	.031	.205	.105	.031	.198	.103	.030	.191	.101	.030		
7.0	.200	.099	.028	.197	.098	.028	.191	.096	.028	.184	.095	.028	.179	.093	.027		
8.0	.187	.091	.026	.184	.091	.026	.178	.089	.025	.173	.087	.025	.168	.086	.025		
9.0	.175	.085	.024	.172	.084	.024	.167	.083	.023	.162	.081	.023	.158	.080	.023		
10.0	.164	.079	.022	.162	.078	.022	.157	.077	.022	.153	.076	.022	.149	.075	.021		

pcc	80%			70%			50%			30%			10%			0
pw	50%	30%	10%	50%	30%	10%	50%	30%	10%	50%	30%	10%	50%	30%	10%	0
pfc	20%			20%			20%			20%			20%			0
RCR	RCR:Room Cavity Ratio						Ceiling Cavity Exitance Coefficients(CCEC)									
0.0	.190	.190	.190	.163	.163	.163	.111	.111	.111	.064	.064	.064	.020	.020	.020	
1.0	.180	.156	.135	.154	.134	.116	.105	.092	.080	.061	.053	.047	.019	.017	.015	
2.0	.173	.132	.098	.148	.114	.084	.101	.079	.059	.058	.046	.035	.019	.015	.011	
3.0	.165	.114	.074	.142	.099	.064	.097	.069	.045	.056	.040	.026	.018	.013	.009	
4.0	.158	.101	.058	.135	.087	.050	.093	.061	.035	.054	.036	.021	.017	.012	.007	
5.0	.150	.091	.047	.129	.078	.041	.089	.055	.029	.051	.032	.017	.017	.011	.006	
6.0	.143	.082	.039	.123	.071	.034	.085	.050	.024	.049	.029	.014	.016	.010	.005	
7.0	.136	.075	.033	.117	.065	.029	.081	.046	.020	.047	.027	.012	.015	.009	.004	
8.0	.129	.070	.029	.111	.060	.025	.077	.042	.018	.045	.025	.011	.015	.008	.003	
9.0	.123	.065	.025	.106	.056	.022	.074	.039	.016	.043	.023	.009	.014	.008	.003	
10.0	.118	.060	.022	.101	.052	.019	.070	.037	.014	.041	.022	.008	.013	.007	.003	

C Range: 0 - 360DEG
 C Interval: 15.0DEG
 Test Speed: HIGH
 Temperature:25.3DEG
 Operators:Meng Yongjian
 Test Date:2017-01-09

γ Range: 0 - 90DEG
 γ Interval: 1.0DEG
 Test System:EVERFINE GO-2000B_V1 SYSTEM V2.0.288
 Humidity:52%
 Test Distance:5.850m [K=1.0000]
 Remarks:

UGR(Unified Glare Rating) Table

Test:U:220.7V I:0.0622A P:12.52W PF:0.9026 Lamp Flux:667.349x1 lm										
NAME: FW5-11W-840					TYPE:Downlight			SERIAL No.:		
SPEC.:4000K					DIM.: L153mm*W45mm*H60mm					
MFR.:										
ceiling/cavity	0.7	0.7	0.5	0.5	0.3	0.7	0.7	0.5	0.5	0.3
walls	0.5	0.3	0.5	0.3	0.3	0.5	0.3	0.5	0.3	0.3
working plane	0.2	0.2	0.2	0.2	0.2	0.2	0.2	0.2	0.2	0.2
Room dimensions	Viewed crosswise					Viewed endwise				
x = 2H y = 2H	30.7	32.2	30.9	32.4	32.6	26.0	27.5	26.3	27.7	27.9
3H	32.8	34.2	33.1	34.4	34.7	27.4	28.9	27.7	29.1	29.3
4H	33.1	34.4	33.4	34.7	35.0	28.0	29.4	28.3	29.6	29.9
6H	33.1	34.4	33.4	34.6	34.9	28.4	29.7	28.7	29.9	30.2
8H	33.0	34.3	33.4	34.5	34.8	28.5	29.7	28.8	30.0	30.3
12H	33.0	34.2	33.3	34.5	34.8	28.5	29.7	28.8	30.0	30.3
4H 2H	31.2	32.5	31.5	32.8	33.0	28.0	29.4	28.4	29.6	29.9
3H	33.4	34.6	33.8	34.9	35.2	29.7	30.9	30.1	31.2	31.5
4H	33.9	34.9	34.2	35.3	35.6	30.4	31.5	30.8	31.8	32.2
6H	33.9	34.9	34.3	35.2	35.6	30.9	31.9	31.3	32.3	32.6
8H	33.9	34.7	34.3	35.1	35.5	31.1	32.0	31.5	32.3	32.7
12H	33.8	34.6	34.2	35.0	35.4	31.1	32.0	31.6	32.3	32.7
8H 4H	34.0	34.9	34.4	35.3	35.7	31.1	32.0	31.6	32.4	32.8
6H	34.1	34.8	34.5	35.2	35.7	31.8	32.6	32.3	33.0	33.4
8H	34.1	34.7	34.5	35.1	35.6	32.0	32.7	32.5	33.1	33.6
12H	34.0	34.6	34.5	35.0	35.5	32.2	32.7	32.6	33.2	33.6
12H 4H	34.0	34.8	34.4	35.2	35.6	31.1	32.0	31.6	32.3	32.7
6H	34.1	34.7	34.5	35.2	35.6	31.8	32.5	32.3	32.9	33.4
8H	34.1	34.6	34.5	35.1	35.5	32.1	32.6	32.5	33.1	33.5
Variations with the observer position at spacings:										
S = 1.0H	+ 0.1 / - 0.2					+ 0.1 / - 0.2				
1.5H	+ 0.2 / - 0.3					+ 0.2 / - 0.4				
2.0H	+ 0.8 / - 0.9					+ 0.4 / - 0.7				

CIE Pub.117 Corrected 667.3 lm Total Lamp Luminous Flux.(8log(F/F0) = -1.4)

C Range: 0 - 360DEG
 C Interval: 15.0DEG
 Test Speed: HIGH
 Temperature:25.3DEG
 Operators:Meng Yongjian
 Test Date:2017-01-09

γ Range: 0 - 90DEG
 γ Interval: 1.0DEG
 Test System:EVERFINE GO-2000B_V1 SYSTEM V2.0.288
 Humidity:52%
 Test Distance:5.850m [K=1.0000]
 Remarks:

UTILIZATION FACTORS TABLE

Test:U:220.7V I:0.0622A P:12.52W PF:0.9026 Lamp Flux:667.349x1 lm		
NAME: FW5-11W-840	TYPE:Downlight	SERIAL No.:
SPEC.:4000K	DIM.: L153mm*W45mm*H60mm	
MFR.:		

REFLECTANCE										
Ceiling	0.8	0.8	0.8	0.7	0.7	0.7	0.5	0.5	0.5	0
Walls	0.7	0.5	0.3	0.7	0.5	0.3	0.7	0.5	0.3	0
Working plane	0.2	0.2	0.2	0.2	0.2	0.2	0.2	0.2	0.2	0
ROOM INDEX	UTILIZATION FACTORS(PERCENT) $k(RI) \times RCR = 5$									
$k = 0.60$	57	45	38	56	45	38	55	44	38	31
0.80	67	55	47	66	55	47	64	54	47	40
1.00	75	64	56	74	63	56	72	65	55	48
1.25	82	72	64	81	71	64	78	69	63	56
1.50	87	77	70	86	76	70	83	75	69	61
2.00	94	86	79	93	85	78	89	82	77	69
2.50	99	91	85	97	89	84	93	87	82	73
3.00	102	95	90	100	94	89	96	91	86	78
4.00	106	101	96	104	99	95	100	95	92	83
5.00	109	104	100	106	102	98	102	98	95	86
ROOM INDEX	UF(total)									Direct
According to DIN EN 13032-2 2004			Suspended					SHRNOM = 1.25		

C Range: 0 - 360DEG
 C Interval: 15.0DEG
 Test Speed: HIGH
 Temperature:25.3DEG
 Operators:Meng Yongjian
 Test Date:2017-01-09

γ Range: 0 - 90DEG
 γ Interval: 1.0DEG
 Test System:EVERFINE GO-2000B_V1 SYSTEM V2.0.288
 Humidity:52%
 Test Distance:5.850m [K=1.0000]
 Remarks:

ISOCANDELA DIAGRAM

Test:U:220.7V I:0.0622A P:12.52W PF:0.9026 Lamp Flux:667.349x1 lm		
NAME: FW5-11W-840	TYPE:Downlight	SERIAL No.:
SPEC.:4000K	DIM.: L153mm*W45mm*H60mm	
MFR.:		

Conical surface Flux(90deg):

344.14 lm

%lum = 51.6%

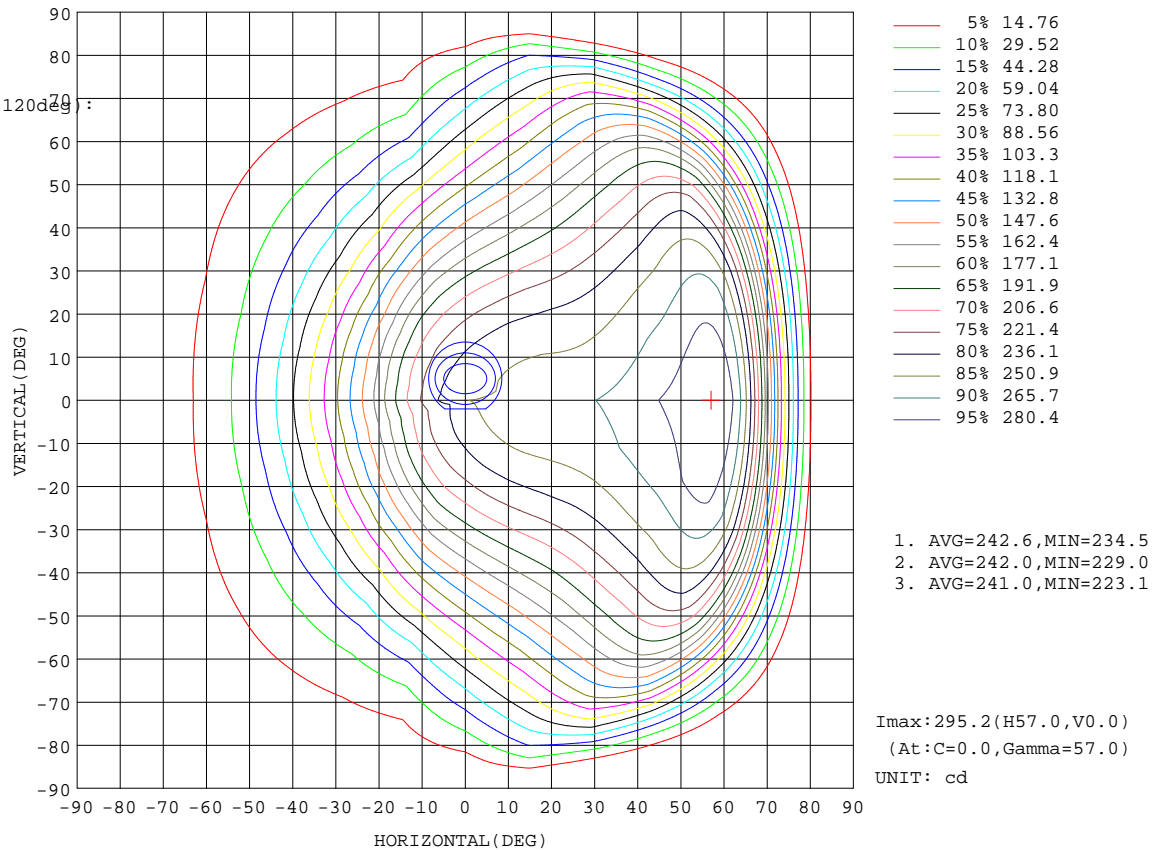
%lamp = 51.6%

Conical surface Flux(120deg):

513.61 lm

%lum = 77.0%

%lamp = 77.0%



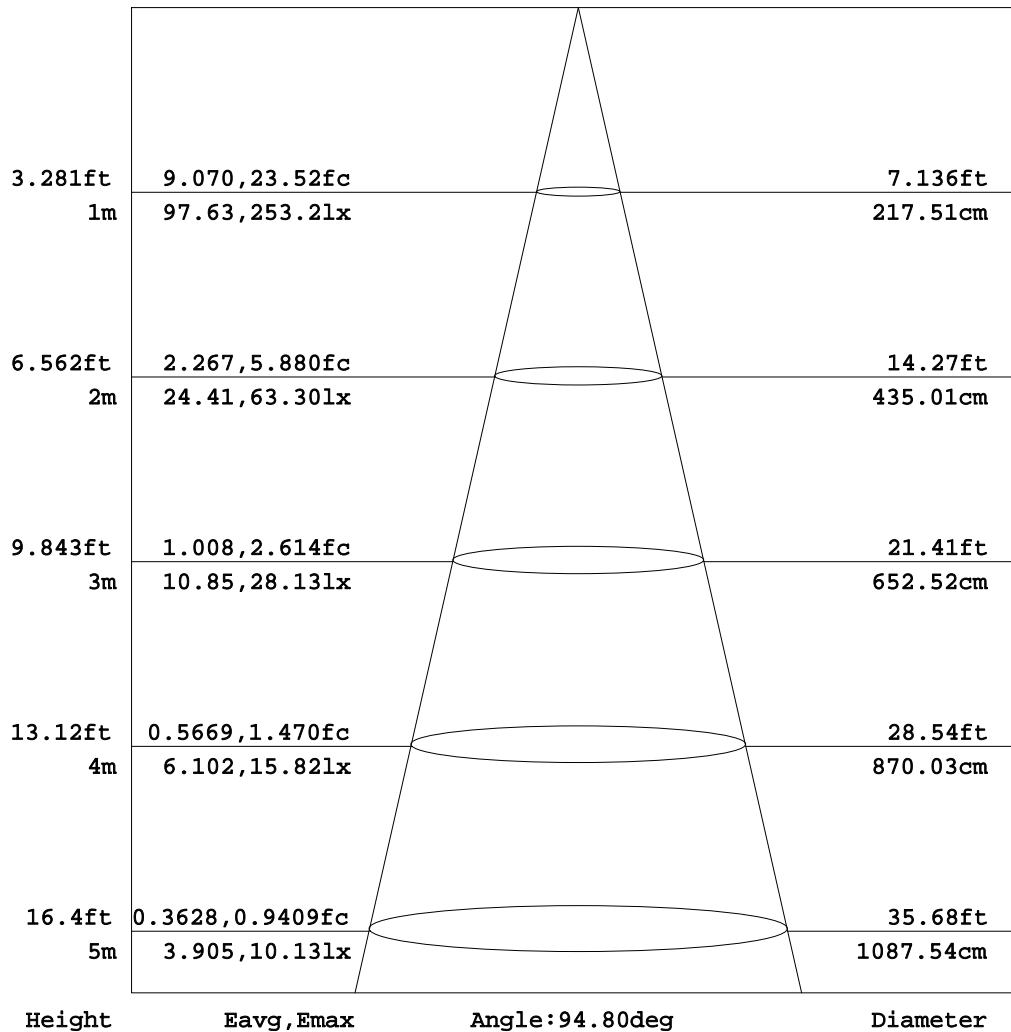
C Range: 0 - 360DEG
C Interval: 15.0DEG
Test Speed: HIGH
Temperature:25.3DEG
Operators:Meng Yongjian
Test Date:2017-01-09

γ Range: 0 - 90DEG
γ Interval: 1.0DEG
Test System:EVERFINE GO-2000B_V1 SYSTEM V2.0.288
Humidity:52%
Test Distance:5.850m [K=1.0000]
Remarks:

AAI Figure

Test:U:220.7V I:0.0622A P:12.52W PF:0.9026 Lamp Flux:667.349x1 lm		
NAME: FW5-11W-840	TYPE:Downlight	SERIAL No.:
SPEC.:4000K	DIM.: L153mm*W45mm*H60mm	
MFR.:		

Flux out:378.3 lm



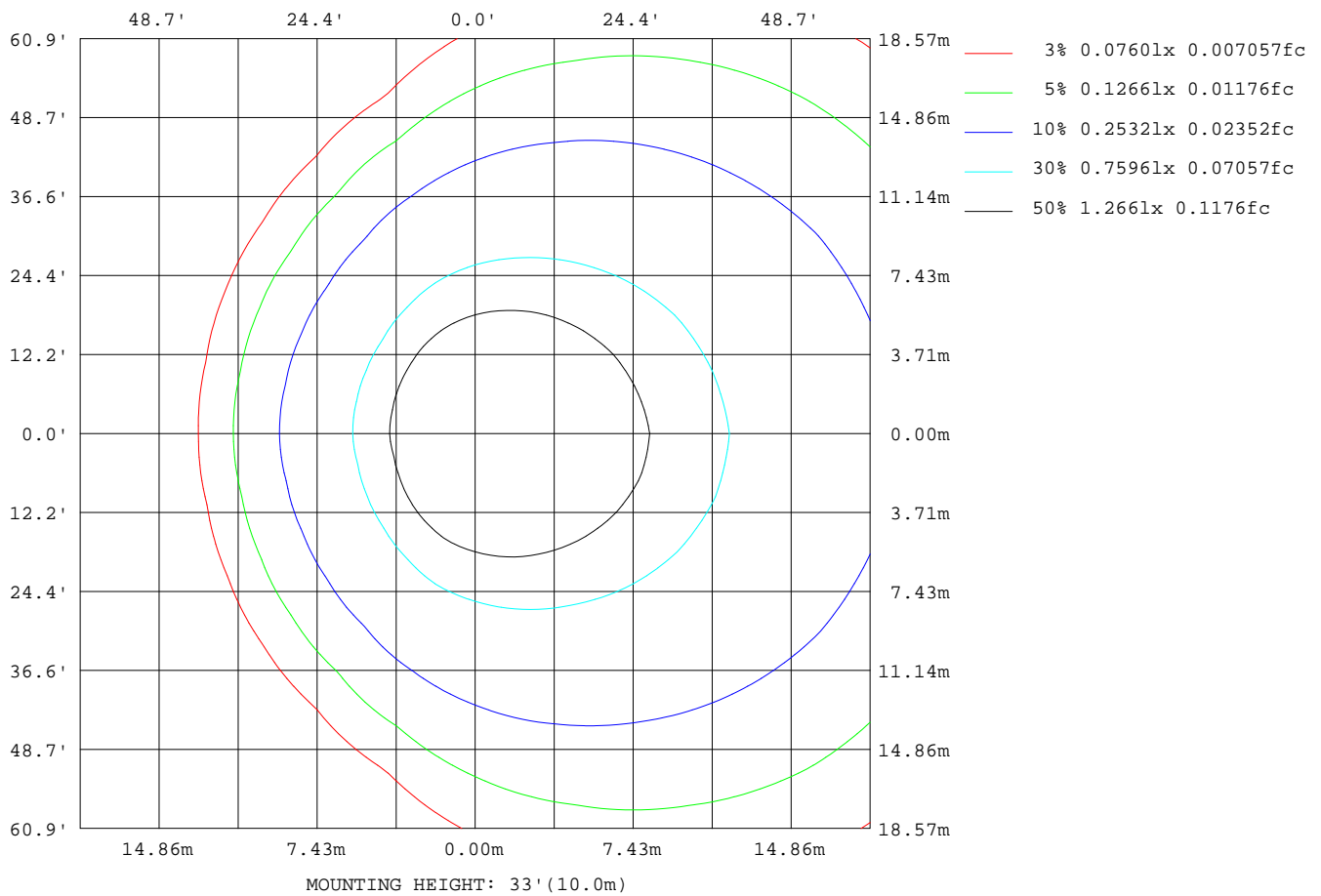
Note:The Curves indicate the illuminated area and the average illumination when the luminaire is at different distance.

C Range: 0 - 360DEG
C Interval: 15.0DEG
Test Speed: HIGH
Temperature:25.3DEG
Operators:Meng Yongjian
Test Date:2017-01-09

γ Range: 0 - 90DEG
γ Interval: 1.0DEG
Test System:EVERFINE GO-2000B_V1 SYSTEM V2.0.288
Humidity:52%
Test Distance:5.850m [K=1.0000]
Remarks:

ISOLUX DIAGRAM

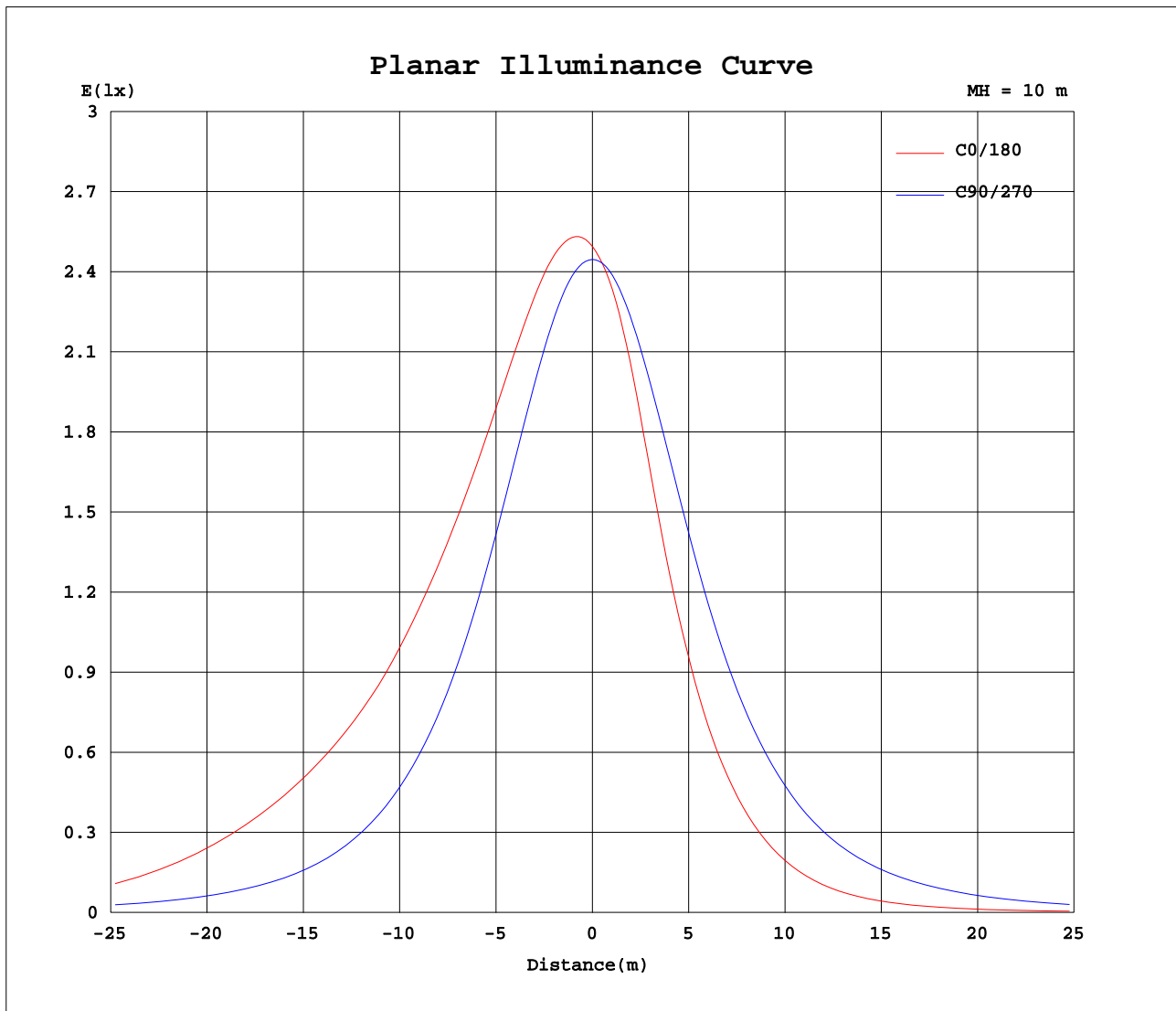
Test:U:220.7V I:0.0622A P:12.52W PF:0.9026 Lamp Flux:667.349x1 lm		
NAME: FW5-11W-840	TYPE:Downlight	SERIAL No.:
SPEC.:4000K	DIM.: L153mm*W45mm*H60mm	
MFR.:		



C Range: 0 - 360DEG
 C Interval: 15.0DEG
 Test Speed: HIGH
 Temperature: 25.3DEG
 Operators: Meng Yongjian
 Test Date: 2017-01-09

γ Range: 0 - 90DEG
 γ Interval: 1.0DEG
 Test System: EVERFINE GO-2000B_V1 SYSTEM V2.0.288
 Humidity: 52%
 Test Distance: 5.850m [K=1.0000]
 Remarks:

Planar Illuminance Curve



C Range: 0 - 360DEG
C Interval: 15.0DEG
Test Speed: HIGH
Temperature: 25.3DEG
Operators: Meng Yongjian
Test Date: 2017-01-09

γ Range: 0 - 90DEG
 γ Interval: 1.0DEG
Test System: EVERFINE GO-2000B_V1 SYSTEM V2.0.288
Humidity: 52%
Test Distance: 5.850m [K=1.0000]
Remarks:

LUMINOUS DISTRIBUTION INTENSITY DATA

Test:U:220.7V I:0.0622A P:12.52W PF:0.9026 Lamp Flux:667.349x1 lm		
NAME: FW5-11W-840	TYPE:Downlight	SERIAL No.:
SPEC.:4000K	DIM.: L153mm*W45mm*H60mm	
MFR.:		

Table--1

UNIT: cd

[illegible]

C Range: 0 - 360DEG
C Interval: 15.0DEG
Test Speed: HIGH
Temperature: 25.3DEG
Operators: Meng Yongjian
Test Date: 2017-01-09

```

γ Range: 0 - 90DEG
γ Interval: 1.0DEG
Test System:EVERFINE GO-2000B_V1 SYSTEM V2.0.288
Humidity:52%
Test Distance:5.850m [K=1.0000]
Remarks:

```

LUMINOUS DISTRIBUTION INTENSITY DATA

Test:U:220.7V I:0.0622A P:12.52W PF:0.9026 Lamp Flux:667.349x1 lm		
NAME: FW5-11W-840	TYPE:Downlight	SERIAL No.:
SPEC.:4000K	DIM.: L153mm*W45mm*H60mm	
MFR.:		

Table--2

UNIT: cd

[illegible]

C Range: 0 - 360DEG
C Interval: 15.0DEG
Test Speed: HIGH
Temperature: 25.3DEG
Operators: Meng Yongjian
Test Date: 2017-01-09

```

γ Range: 0 - 90DEG
γ Interval: 1.0DEG
Test System:EVERFINE GO-2000B_V1 SYSTEM V2.0.288
Humidity:52%
Test Distance:5.850m [K=1.0000]
Remarks:

```

Photometric Data Table [cd]

G/C	0.0	15.0	30.0	45.0	60.0	75.0	90.0	105.0	120.0	135.0
0.0	249.5	248.2	247.3	246.4	245.8	245.1	244.6	244.2	243.7	243.4
3.0	253.8	252.3	250.9	249.3	247.6	245.9	244.1	242.4	240.7	239.4
6.0	257.0	255.4	253.6	251.2	248.4	245.5	242.4	239.5	236.5	234.3
9.0	259.5	257.8	255.3	252.0	248.0	243.8	239.2	235.1	230.9	227.6
12.0	261.2	259.4	256.2	251.9	246.4	240.8	234.8	229.3	223.6	218.0
15.0	262.2	260.3	256.4	250.9	244.0	236.8	229.1	222.2	214.4	206.8
18.0	262.6	260.5	255.8	249.2	240.7	231.9	222.4	213.9	203.5	193.3
21.0	263.0	260.5	254.7	246.8	236.7	226.0	214.7	204.5	191.5	178.5
24.0	263.3	260.5	253.4	243.8	232.0	219.3	206.1	194.1	178.0	162.7
27.0	264.1	260.7	252.1	240.6	226.6	211.9	196.6	182.7	163.7	146.7
30.0	265.5	261.5	251.0	237.1	220.7	203.8	186.5	170.3	149.1	131.0
33.0	267.6	262.8	250.3	233.6	214.3	195.2	176.0	157.7	134.2	116.1
36.0	270.3	264.7	250.0	230.2	207.9	186.5	165.2	145.1	119.6	102.5
39.0	273.6	267.1	250.1	227.0	201.4	177.7	154.4	132.1	105.9	89.68
42.0	277.2	269.8	250.3	224.0	195.0	168.9	143.6	119.1	93.06	77.61
45.0	280.6	272.4	250.7	221.0	188.7	160.1	132.8	106.6	81.13	67.05
48.0	284.0	274.7	250.7	218.0	182.6	151.3	122.0	94.29	69.91	57.19
51.0	289.1	278.2	250.1	214.7	176.4	142.4	111.3	82.08	59.43	48.36
54.0	293.5	281.5	250.2	210.7	169.9	133.6	100.6	70.25	50.26	40.63
57.0	295.2	283.0	249.3	205.9	162.9	123.8	90.47	59.15	41.97	33.88
60.0	290.4	279.5	246.0	200.7	155.3	114.6	80.85	49.06	34.55	27.82
63.0	273.7	266.3	237.3	193.2	146.8	105.5	71.36	40.02	28.20	22.75
66.0	239.7	237.9	218.7	182.3	137.5	96.15	61.67	31.86	22.77	18.52
69.0	187.7	191.8	185.9	164.9	127.2	86.46	52.80	24.79	18.07	14.92
72.0	127.7	134.8	139.6	138.1	114.2	76.41	43.57	18.94	14.21	11.84
75.0	74.07	80.38	89.30	100.5	96.28	65.80	34.58	14.18	10.98	9.306
78.0	34.72	39.20	46.66	60.59	70.81	54.64	25.44	10.30	8.250	7.017
81.0	7.649	10.99	16.56	27.52	40.32	41.54	16.41	7.157	5.918	5.015
84.0	0.4156	0.5518	0.7994	4.134	14.29	24.42	8.832	4.573	3.801	3.393
87.0	0.1431	0.1809	0.2661	0.3551	0.5933	6.031	4.547	2.335	2.064	1.862
90.0	0.0853	0.1006	0.1290	0.1268	0.1246	0.1334	0.5204	0.4810	0.6013	0.6231
G/C	150.0	165.0	180.0	195.0	210.0	225.0	240.0	255.0	270.0	285.0
0.0	242.9	242.8	249.5	248.2	247.3	246.4	245.8	245.1	244.6	244.2
3.0	238.1	237.5	244.0	242.8	242.5	242.4	242.9	243.4	244.2	244.9
6.0	232.0	230.8	237.0	235.9	236.5	237.1	238.7	240.3	242.6	244.5
9.0	223.6	221.2	226.8	226.1	228.2	230.1	233.0	235.8	239.4	242.8
12.0	212.7	209.4	214.3	213.9	217.1	220.3	225.8	229.9	235.0	239.8
15.0	198.9	194.2	198.1	198.3	203.1	208.9	216.7	222.7	229.5	235.8
18.0	183.5	177.9	181.1	181.7	187.5	195.2	205.5	214.3	222.9	230.9
21.0	166.9	160.8	163.4	164.1	170.7	180.0	193.6	204.9	215.2	225.1
24.0	150.3	144.6	146.9	147.4	153.7	164.0	179.9	194.3	206.6	218.4
27.0	134.6	129.2	131.2	131.8	137.5	147.7	165.4	182.9	197.3	211.1
30.0	119.9	114.5	116.0	117.0	121.9	131.9	150.7	170.5	187.2	203.1
33.0	105.8	100.4	101.9	102.6	107.6	117.2	135.9	157.9	176.9	194.7
36.0	92.27	87.86	89.21	89.73	93.85	103.3	120.7	145.4	166.3	186.1
39.0	80.32	75.95	76.98	77.55	81.67	90.38	106.9	132.7	155.7	177.6
42.0	68.95	64.74	65.57	65.93	70.28	78.26	94.07	120.0	145.1	169.0
45.0	58.48	54.70	55.21	55.68	59.86	67.54	82.11	107.4	134.6	160.4
48.0	49.36	45.65	45.82	46.49	50.55	57.53	70.92	95.09	123.3	151.8
51.0	41.36	37.46	37.24	38.13	42.42	48.64	60.42	82.77	112.6	143.0
54.0	34.17	30.38	29.96	30.92	35.09	40.86	51.12	70.81	102.2	134.1
57.0	28.03	24.51	23.87	24.98	28.83	34.09	42.74	59.50	92.18	125.1
60.0	22.93	19.62	18.88	20.01	23.68	28.01	35.20	49.39	82.62	116.1
63.0	18.69	15.67	14.81	15.99	19.36	22.94	28.78	40.30	73.12	107.0
66.0	15.11	12.45	11.67	12.77	15.72	18.68	23.30	32.06	63.78	97.60
69.0	12.23	9.971	9.245	10.24	12.75	15.09	18.50	25.00	54.86	87.89
72.0	9.818	7.942	7.315	8.210	10.27	12.00	14.58	19.18	45.65	77.74
75.0	7.694	6.101	5.577	6.316	8.061	9.435	11.30	14.37	36.41	66.58
78.0	5.757	4.678	4.273	4.816	6.037	7.104	8.503	10.46	27.19	54.96
81.0	4.275	3.539	3.241	3.630	4.472	5.051	6.067	7.245	17.84	40.86
84.0	2.892	2.408	2.211	2.464	2.998	3.373	3.889	4.582	9.841	22.39
87.0	1.638	1.414	1.318	1.446	1.669	1.808	2.014	2.217	4.769	4.249
90.0	0.6188	0.5729	0.5947	0.5947	0.5707	0.5641	0.4592	0.3170	0.1509	0.1050
G/C	300.0	315.0	330.0	345.0						
0.0	243.7	243.4	242.9	242.8						
3.0	245.6	246.3	246.5	246.8						
6.0	246.5	248.1	249.2	249.8						
9.0	246.1	248.9	251.0	252.1						
12.0	244.7	248.8	252.0	253.6						
15.0	242.4	247.9	252.2	254.5						
18.0	239.3	246.3	251.7	254.7						
21.0	235.4	244.0	250.7	254.7						

C Range: 0 - 360DEG

C Interval: 15.0DEG

Test Speed: HIGH

Temperature: 25.3DEG

Operators: Meng Yongjian

Test Date: 2017-01-09

γ Range: 0 - 90DEG

γ Interval: 1.0DEG

Test System: EVERFINE GO-2000B_V1 SYSTEM V2.0.288

Humidity: 52%

Test Distance: 5.850m [K=1.0000]

Remarks:

Photometric Data Table [cd]

24.0	230.8	241.1	249.6	254.7
27.0	225.6	237.9	248.4	254.9
30.0	219.8	234.6	247.3	255.6
33.0	213.7	231.2	246.7	257.0
36.0	207.4	228.0	246.5	258.8
39.0	201.2	224.9	246.7	261.3
42.0	195.0	222.0	247.1	264.0
45.0	189.0	219.2	247.5	266.6
48.0	183.0	216.3	247.6	268.8
51.0	177.0	213.1	247.1	272.2
54.0	170.7	209.3	247.3	275.5
57.0	163.9	204.6	246.5	276.9
60.0	156.4	199.3	243.3	273.3
63.0	147.9	191.6	234.7	260.0
66.0	138.8	180.2	216.4	231.8
69.0	127.6	161.9	184.1	186.2
72.0	114.1	133.8	138.0	130.4
75.0	95.44	96.15	88.20	77.83
78.0	69.10	56.64	46.35	37.75
81.0	38.60	24.91	16.60	10.41
84.0	12.95	2.546	0.6988	0.4859
87.0	0.4305	0.2617	0.1783	0.1452
90.0	0.0853	0.0831	0.0787	0.0722

C Range: 0 - 360DEG
C Interval: 15.0DEG
Test Speed: HIGH
Temperature: 25.3DEG
Operators: Meng Yongjian
Test Date: 2017-01-09

γ Range: 0 - 90DEG
γ Interval: 1.0DEG
Test System: EVERFINE GO-2000B_V1 SYSTEM V2.0.288
Humidity: 52%
Test Distance: 5.850m [K=1.0000]
Remarks: